

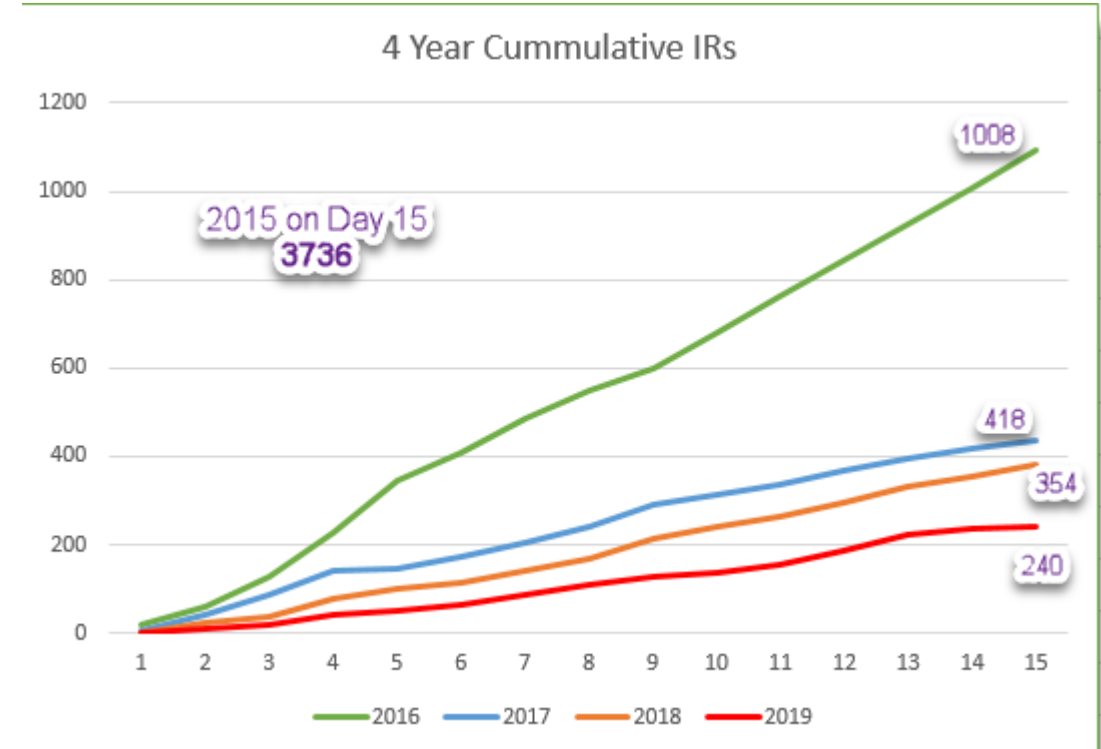
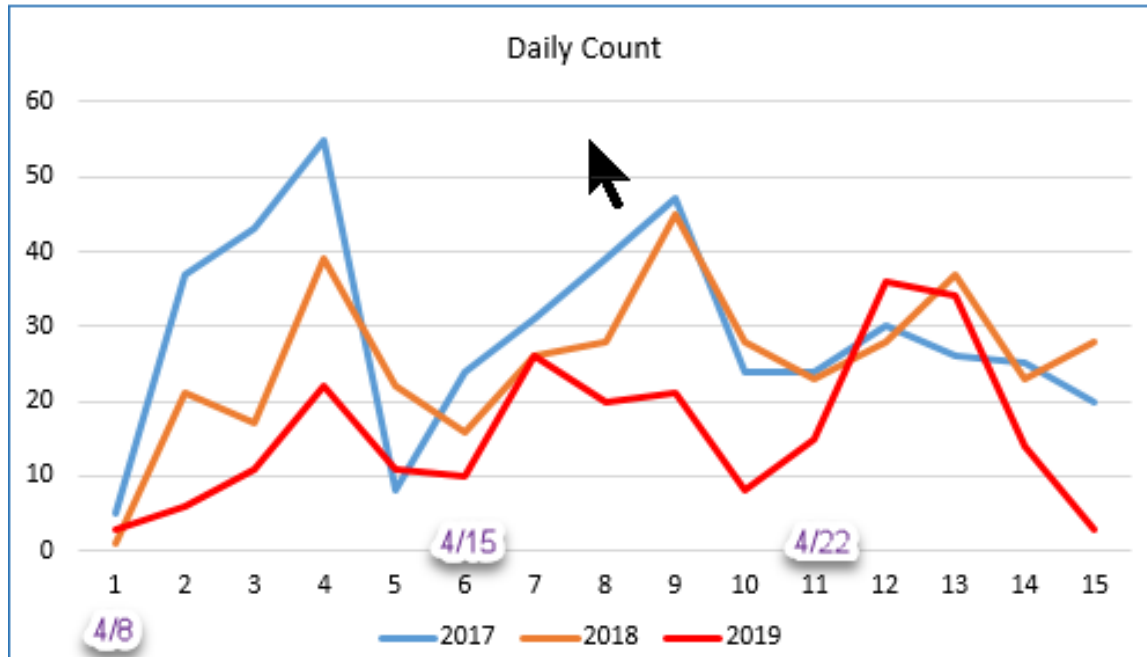
Transition to PSAT 8/9 in Grade 8

Michigan Educational Research Association, Inc.
April 29, 2019

- Before Testing
- During Testing
- After Testing



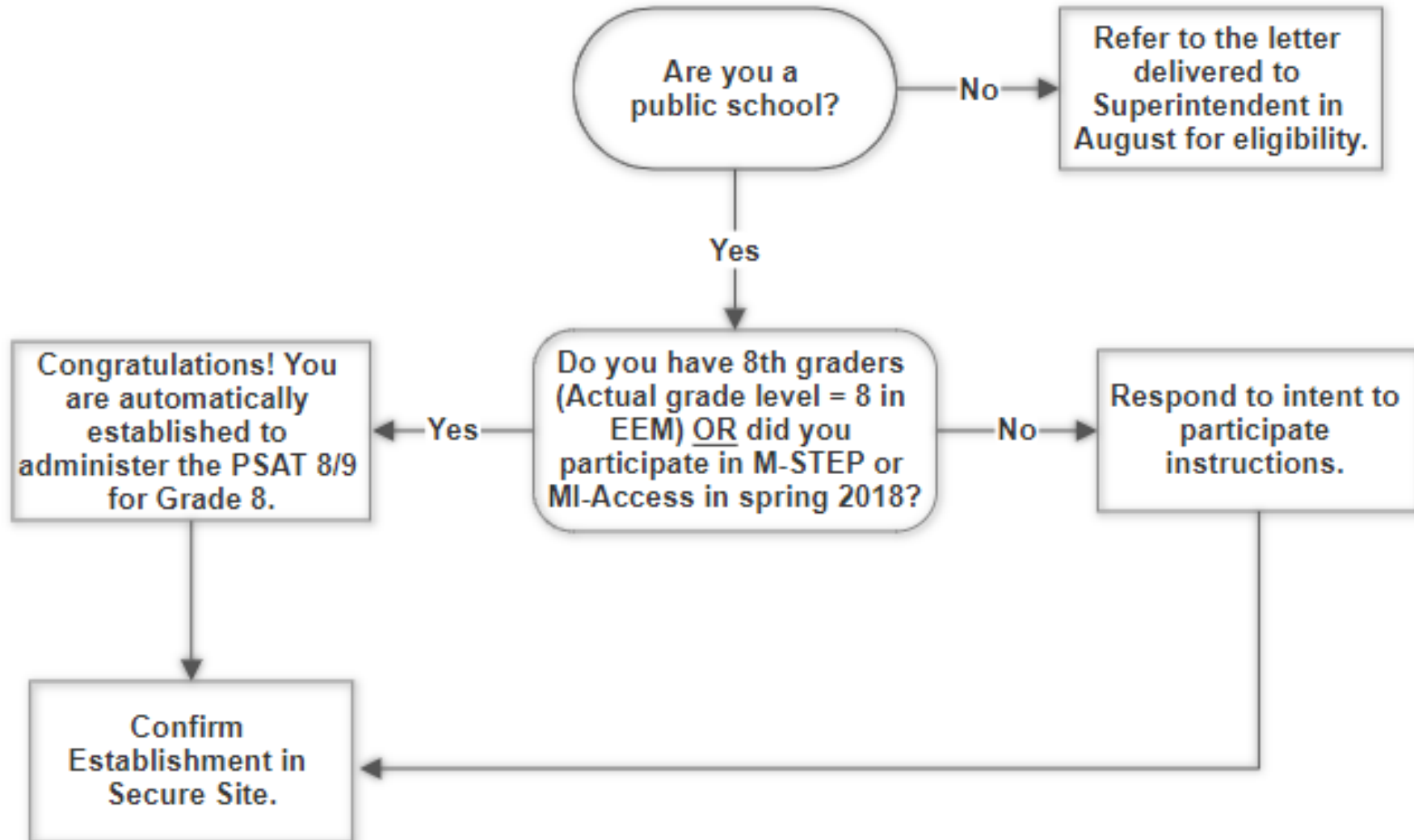
Incident Reports



“I’m getting paranoid because it
went so smoothly.”

Ted Gardella (4/25/19)

Establishment

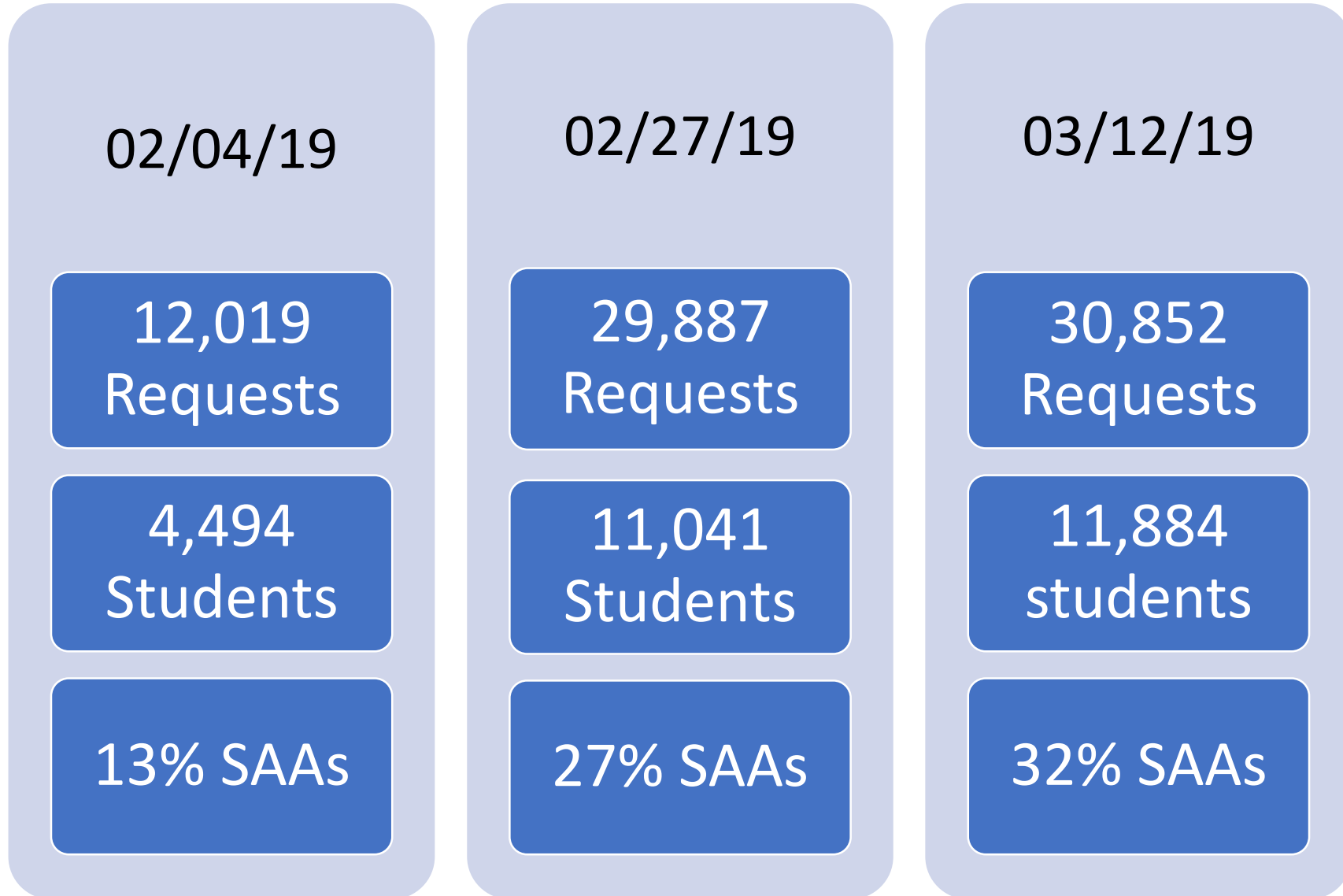


SSD Process



Process: State-Allowed		Process: College Board Approved
Automatically approved	Approvals	Most requests will be school-verified and automatically approved within a few days.
Only valid for one year and are only used for state assessments.	Length of Use	Remains valid until IEP or 504 changes and can be used for other College Board assessments.
None	Documentation Required	For some requests, yes. If documentation is required, approvals could take up to 7 weeks.
Students, schools, and MDE	Who Receives Scores?	Students, schools, and MDE
Early January – Mid-February	Timeline for Requests	Anytime – Mid-February
Yes. School will apply either for state-allowed or College Board approved in the next year, if applicable.	Reapplication Required?	No. Student remains approved for accommodation unless the IEP or 504 requires a change. Using this process does not change the IEP team obligation to review student’s needs and supports at each IEP

SSD Counts





- ❑ Online training required for Test Coordinators and Proctors
 - 4,944 people completed PSAT training as of March 12
 - 1,397 people are in-progress as of March 12
 - **5,642 people completed PSAT training as of April 10**
 - About half of in-progress completed prior to administration
 - Training is the same for PSAT 8/9 and PSAT 10
 - If staff serving in same role for SAT and PSAT they are required to take only one of the trainings
- ❑ PPT provided for training Room and Hall Monitors

SAT Peer Review



- ❑ Initial submission: May 2018
- ❑ USED Response: November 2018 - Partially Meets
 - 2.1 Test Design and Development: alignment concerns
 - 5.1 Procedures for Including Students with Disabilities: students receiving accommodations should receive college-reportable scores
 - 6.1 State Adoption of Academic Achievement Standards for All Students: ESSA requires minimally 2 cuts and 3 performance levels
- ❑ Resubmission: January 2019
- ❑ SAT State User Group meeting: February 2019



- 2.1 Test Design and Development: alignment concerns
 - Resubmission - Pointed to 6 existing state alignment studies (MI, NH, CT, DL, MN, IL)
 - User Group Discussion:
 - USED set precedence for approval without 2.1 by approving an ACT state
 - States could enhance the SAT
 - College Board could change the SAT blue print
 - Develop argument that the complexity of items on SAT implicitly include more foundational content standards



❑ 5.1 Procedures for Including Students with Disabilities: students receiving accommodations should receive college-reportable scores

- Resubmission - Since initial submission, CB has added supports specifically around ELs
- User Group Discussion:
 - Math only exception for 1st year ELs has been added
 - 50% extended time for ELs has been added
 - Test direction translations and glossaries added
 - Full translations are not being considered at this time
 - Sticking point is ASL (versus ESL)



- ❑ 6.1 State Adoption of Academic Achievement Standards for All Students: ESSA requires minimally 2 cuts and 3 performance levels
 - Resubmission - MI provided additional documentation from SBE and TAC accepting CB benchmarks
 - User Group Discussion:
 - Other states have held standard setting activities with College Board
 - Bad things happen when the state's proficiency cut does not equal the College Board benchmark cut.
 - MDE is actively pursuing standard setting with College Board this year



Standard Setting

for PSAT 8/9 in Grade 8

- MDE and the College Board will conduct Standard Setting this year
 - Will be required for Peer Review
 - Goal is to maintain the College Board grade-level benchmark cut as the proficiency cut
 - Evidence –based Reading and Writing section score
 - Math section score
 - Not overall PSAT 8/9 score
 - Michigan educators will be critical to the process
 - 3 cuts and 4 performance levels



Standard Setting Timeframe



New PSAT Reports

Reports for 2019

- ISRs
- ~~Student Rosters~~
 - ~~ELA~~
 - ~~Mathematics~~
- Demographic Reports

STUDENT, IMA | Grade 08 | PSAT 8/9

UIC: [REDACTED] | Student ID: [REDACTED] | Gender: F | DOB: 12/23/2003 | Ethnicity: White | Student with Disability N | English Learner: N | Former English Learner: N | Accommodations:

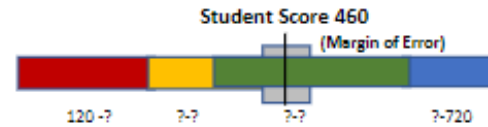


TOTAL SCORE | Scale 240-1440
Total Score: 900

SECTION SCORES | Scale 120-720

■ Not proficient
 ■ Partially Proficient
 ■ Proficient
 ■ Advanced

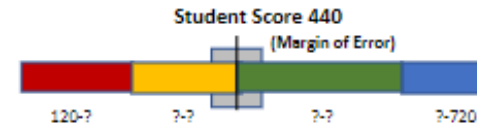
Evidence-based Reading and Writing
Range 120-720



PSAT 8/9 for Grade 8 Benchmark Score 410

Scale Score	Margin of Error	Performance Level	Growth Score (AP)	Growth Target (AP)	Threshold
120	±1	Partially Proficient	40	50	240/120

Math
Range 120-720



PSAT 8/9 for Grade 8 Benchmark Score 450

Scale Score	Margin of Error	Performance Level	Growth Score (AP)	Growth Target (AP)	Threshold
120	±1	Partially Proficient	40	50	240/120

TEST SCORES | Scale 6-36

Reading 23

Writing and Language 23

Math 22

CROSS TEST SCORES | 6-36

Analysis in History/Social Studies 21

Analysis in Science 22

Cross-Test Scores reflect the application of reading, writing, language, and math in history, social studies, and science contexts.

SUBSCORES | 1-15

Command of Evidence 7
 Words in Context 13
 Expression of Ideas 9
 Standard English Conventions 9

Heart of Algebra 9
 Problem Solving and Data Analysis 6

Things to Emphasis in 2020

- Update EEM for assessment roles early
 - Ideally before **September 1, 2019**
- Important things happen in the fall
 - Intent to Participate (i.e. Establishment)
 - Off-site Test Administration requests
 - Implementation Training
- If you want accommodated testing approved and materials guaranteed for initial test day
 - Have request entered into SSD online by deadline
 - Feb 19 in 2019 – anticipate similar date for 2020
 - Use the SAA path for requesting accommodations
 - No impact to students in grades 8-10
 - Use with care on SAT to ensure college reportable scores
- Yes, you do need to test all 8th graders on **initial test day** unless:
 - They are absent
 - They are receiving an accommodation
- College Board-provided training **required** before handling secure test materials or administering the test
- Sign up for Spotlight (www.michigan.gov/mde-spotlight)

Spotlight MICHIGAN Department of Education
on Student Assessment and Accountability

September 6, 2018

Quick Links ... take you directly to articles or sections ...

- 2018-2019 Guide to State Assessments
- Early Literacy and Mathematics Benchmark TAM and Online Directions Available NOW
- Download Audio Content for Early Literacy and Mathematics Benchmark Assessments
- English Learner (EL) Exit Deadline Approaching
- Updating Entity and Contacts in the Educational Entity Master (EEM)
- Managing Users on the OEAA Secure Site
- College Board Corner
- Important Dates
- Contacts

2018-2019 Guide to State Assessments
The 2018-2019 Guide to State Assessments is now available. This Guide includes information on:

- changes to the assessments
- test sessions and timings
- resources for online and paper/pencil tests
- supports and accommodations
- online technology
- dates for both online and paper/pencil testing in the Summative Testing Schedule, including:
 - a calendar with testing windows for the summative online assessments (M-STEP, MI-ACCESS, WIDA) and applicable paper/pencil assessments such as SAT with Essay, ACT WorkKeys, PSAT, MI-Access, and WIDA)
 - calendars with designated paper/pencil dates for M-STEP, MME (M-STEP, SAT with Essay, and ACT WorkKeys), and PSAT

The 2018-2019 Guide to State Assessments is located under the **What's New** section of each assessment's web page:

- [Early Literacy and Mathematics Benchmark Assessments](http://www.michigan.gov/earlylitandmath) (www.michigan.gov/earlylitandmath)
- [M-STEP](http://www.michigan.gov/mstep) (www.michigan.gov/mstep)
- [MI-Access](http://www.michigan.gov/mi-access) (www.michigan.gov/mi-access)
- [MME](http://www.michigan.gov/mme) (www.michigan.gov/mme)
- [WIDA](http://www.michigan.gov/wida) (www.michigan.gov/wida)
- [PSAT](http://www.michigan.gov/psat) (www.michigan.gov/psat)

Key: Reminder (previously run article) Includes information Tech Coordinators also need to know

► [Sign up for Spotlight](http://www.michigan.gov/mde-spotlight) (www.michigan.gov/mde-spotlight) and/or access | Call Center: 877-560-8378

Questions?



Website: www.michigan.gov/psat

Email: mde-oeaa@michigan.gov

Phone: 877-560-8378

Kate Cermak

cermakk@michigan.gov

517-241-7037